
Short Instructions Floating Licenses with FLEXIm

Hoppegarten, 18/12/2006

The following files are necessary for using a floating license:

lmgrd.exe

lmutil.exe

lmtools.exe

torrosw.exe

2004torro.lic this file may be distributed by email separatly. So please copy it to the path mentioned below.

These are used by the FLEXIm Version 9.2 license manager from Globetrotter Inc.

After installation you will find the files in the following locations:

c:\program files\torro-softworks\plot2pdf flex\2004torro.lic

c:\program files\torro-softworks\plot2pdf flex \flexIm\lmgrd.exe

c:\program files\torro-softworks\plot2pdf flex \flexIm\lmutil.exe

c:\program files\torro-softworks\plot2pdf flex \flexIm\lmtools.exe

c:\program files\torro-softworks\plot2pdf flex \flexIm\torrosw.exe

To start Plot2PDF you need to start the licence manager using the program lmtools.exe. To do this, you need Administrator rights.

For example, find lmtools.exe using Windows Explorer. Start lmtools.exe by double clicking on it.

Define a service under the Config Services tab, as follows:

Type TORROSW License Manager into the Service Name dropdown.

Enter the path to the program lmgrd.exe as shown below.

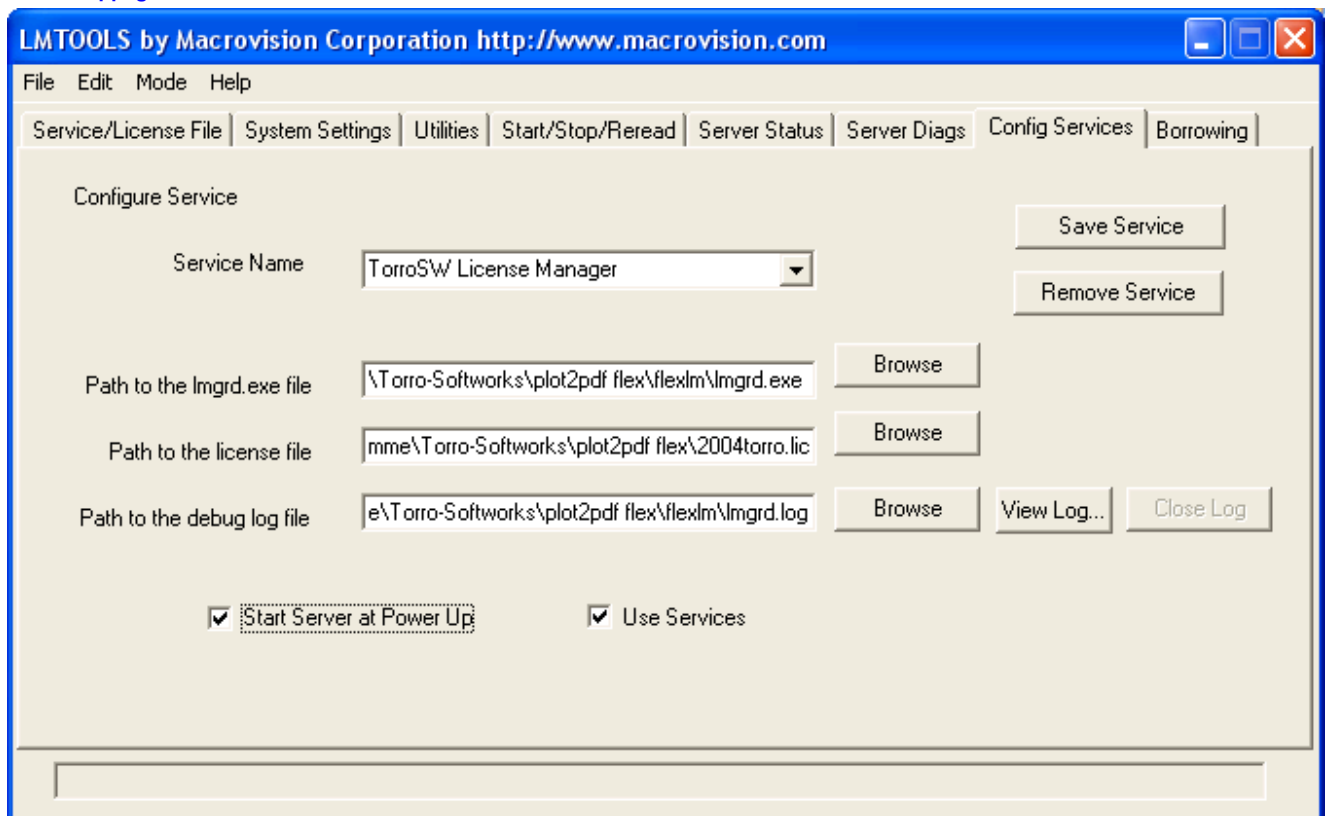
Enter the path to the license file.

Enter the path to a log file.

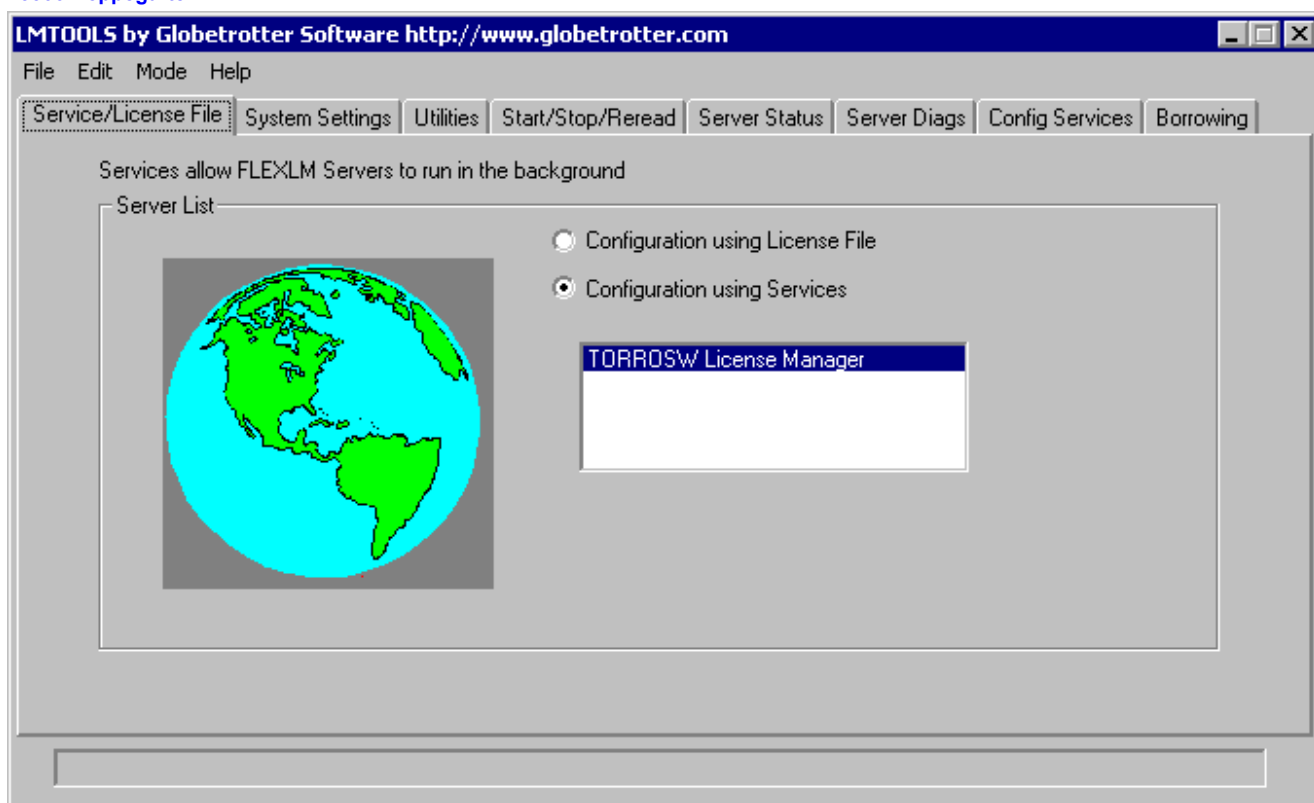
To make the service a Windows service rather than a FLEXIm service, select (first) **Use Services**, than **Start Server at Power UP**.

If you make the service a Windows service you can start it at power up by selecting Start Server at Power Up.

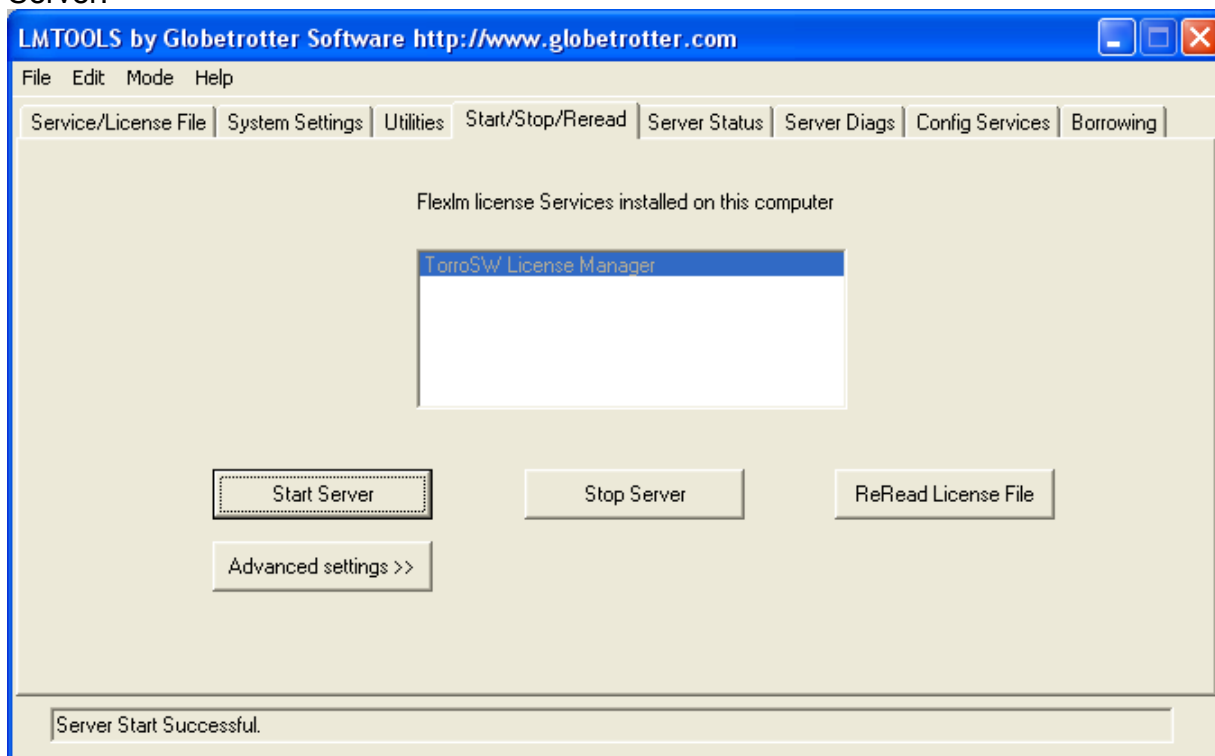
To save your selections, click on Save Service.



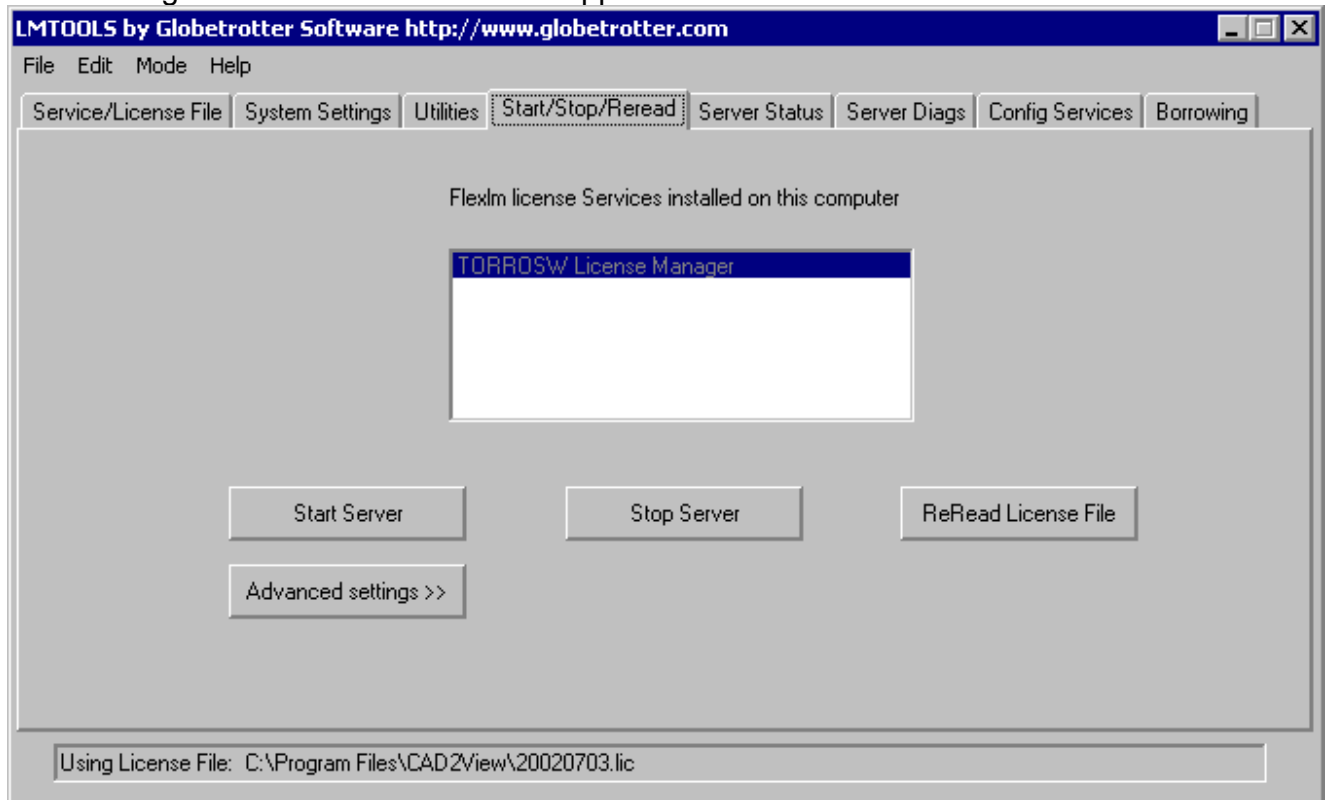
Under the **Service/License File** tab, select **Configuration using Services** and TORROSW License Manager, as shown below.



Finally, start the server by going to the Start/Stop/Reread tab and clicking on Start Server.



The message **Server Start Successful** appears



For full information on using FLEXlm please see the file enduser.pdf. You will find this file in your c:\program files\plot2pdf\flex\flexlm folder.

Run PlotVision

The Messagebox in **Help** => **About** should indicate a registered version like this,

